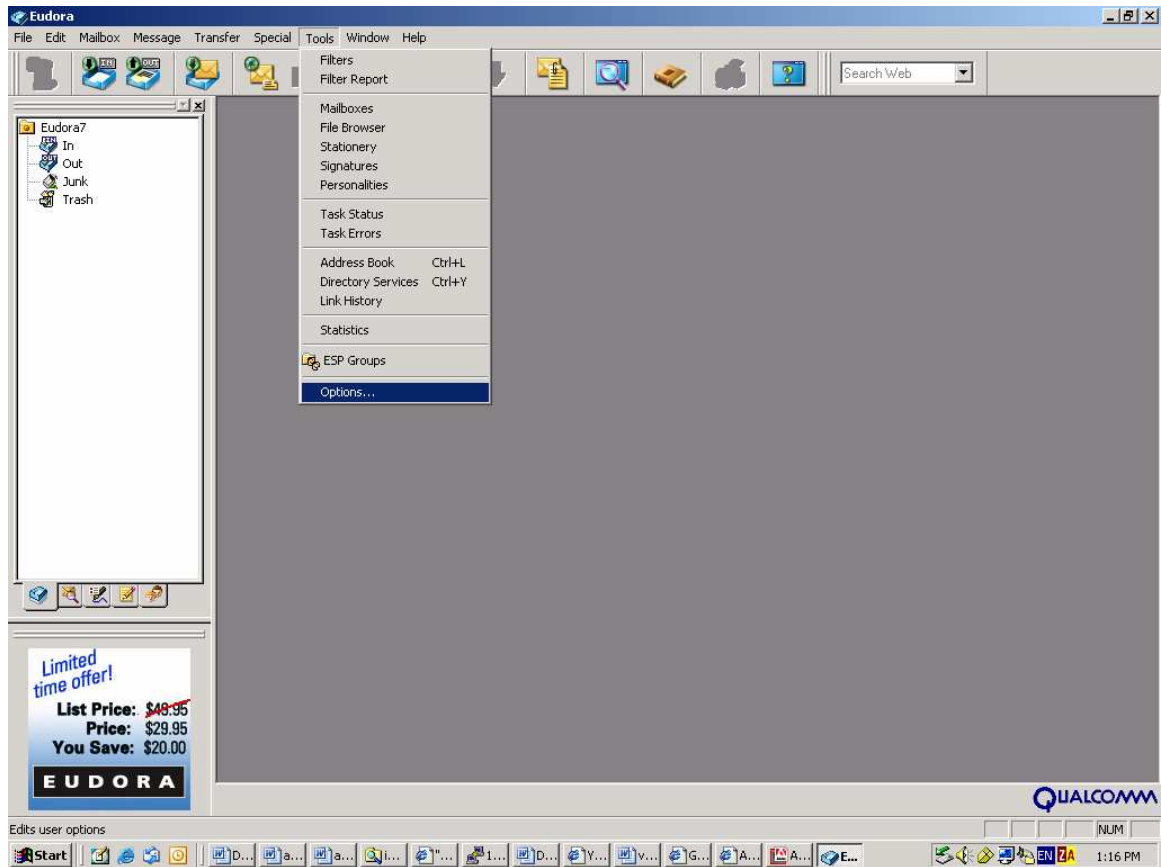
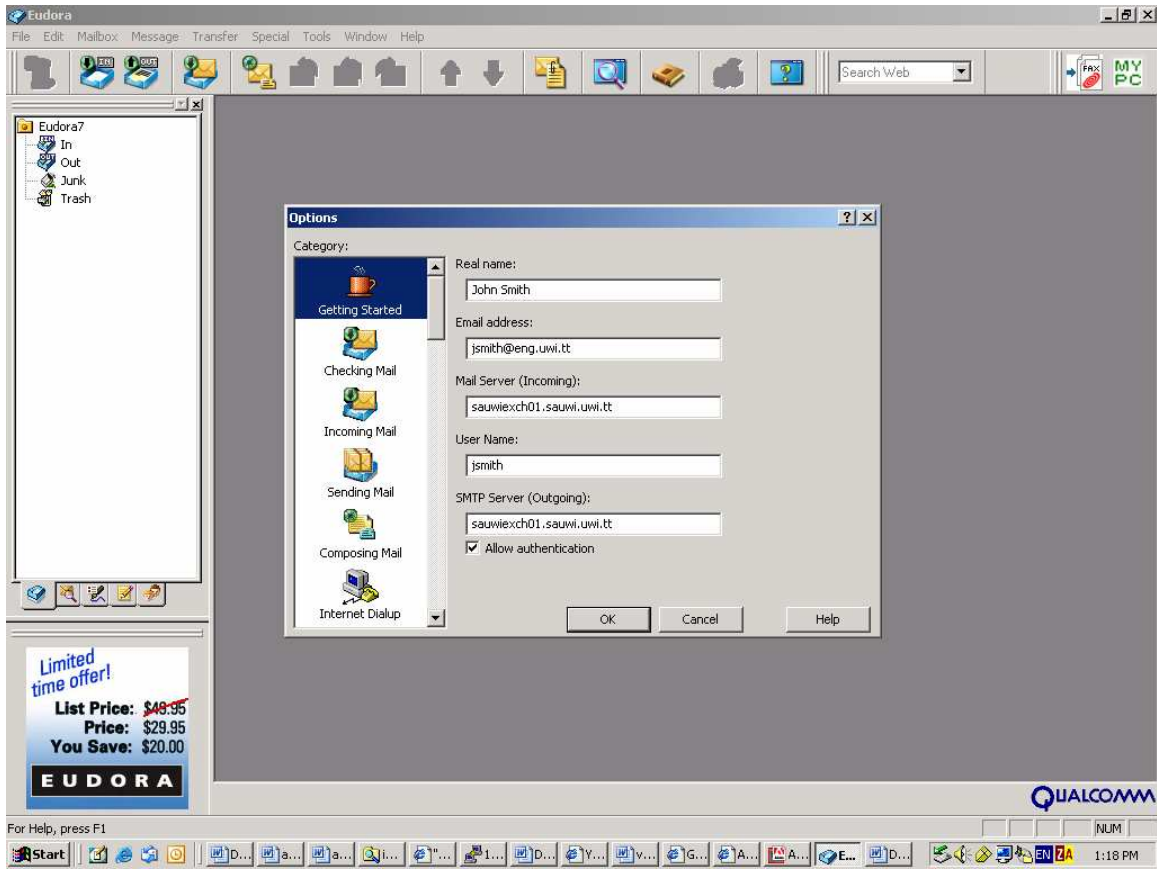


Setting up Eudora for access to Microsoft Exchange Account

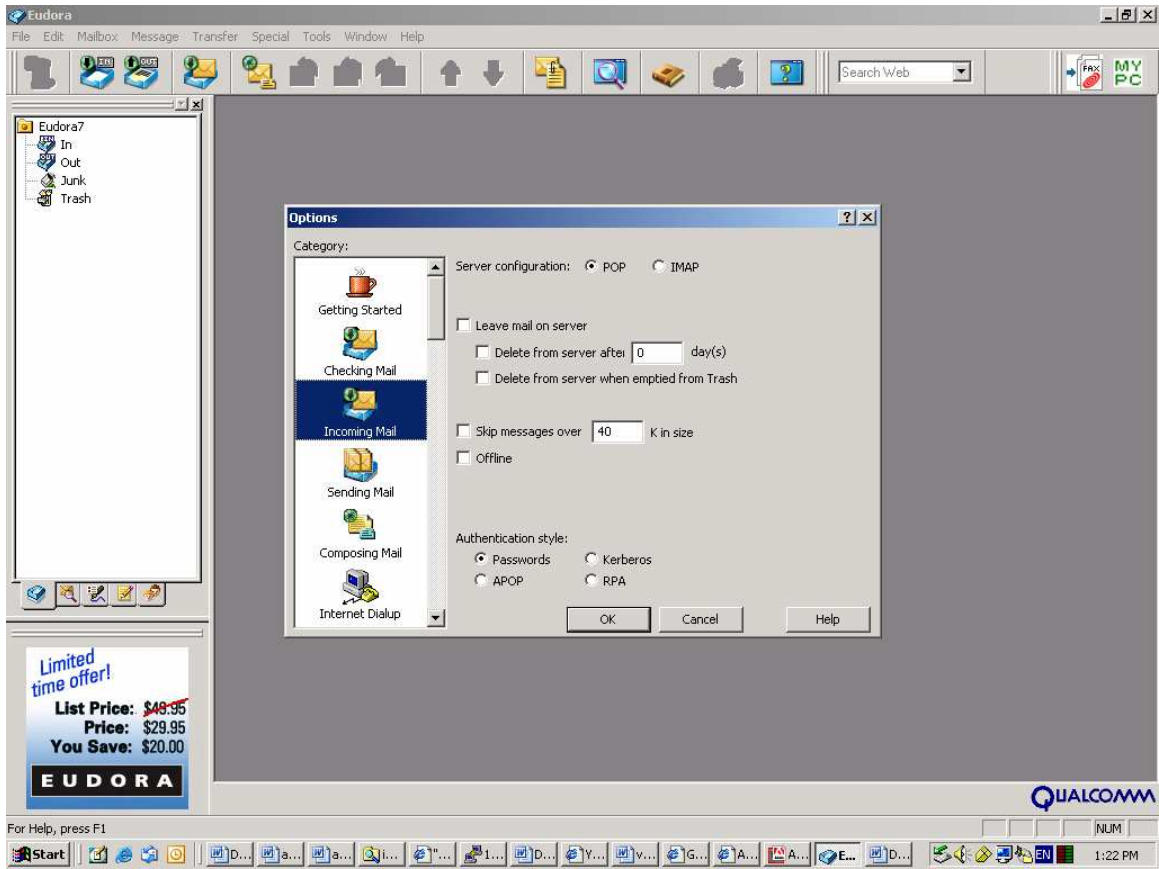


To set up the new account open Eudora and go to **Tools/Options**.



The **Options** box appears. In the **Getting Started** section you can enter name, email address (**username@eng.uwi.tt**), mail server incoming (**sauwiexch01.sauwi.uwi.tt**), username (the username you use to log on to the sauwi domain), and SMTP server outgoing (**sauwiexch01.sauwi.uwi.tt**).

Click on the **Incoming Mail** icon. The default server configuration is POP. Click on the radio button by **IMAP** instead. Accept all the other defaults. Click **OK** to save changes.



When the changes are saved you should be prompted for your password on the sauwi domain. The mail on the Exchange server will then be displayed as below under the name **Dominant**.

